



RR1200B

Universal Deluxe Turntable Case



Rugged Road Ready Features

- * Beefy, Stackable Ball Corners
- * Double Anchor Industrial Rivets
- * Recessed, Industrial Grade Latches
- * Recessed, Spring Loaded Handles
- * Premium 3/8" Vinyl Laminated Plywood
- * Tongue and Groove Locking Fit
- * Rear Access Cable Port
- * ATA 300 Rating
- * Road Ready Limited Lifetime Warranty

Product Dimensions

Shipping Dimensions (inch): 22 x 17.7 x 10.4

Shipping Weight (lbs): 21.5

Product Dimensions (inch): 21.4 x 17.2 x 9.6

Product Weight (lbs): 20.2

Shipping Dimensions (cm): 56 x 45 x 26.5

Shipping Weight (kg): 9.8

Product Dimensions (cm): 54.5 x 43.7 x 24.4

Product Weight (kg): 9.2

The ultimate hook-up of style and rugged construction, the RR1200B is constructed to hold-up to 1000 miles of abuse. The RR1200B's rugged construction features our unique modular poly-foam padding system which allows you to create the perfect custom space for virtually any turntable on the market including industry standards like Technics 1200's, Vestax PDX2000 and Numark TT-X1 models. We also threw in a rear access cable port for no hassle connections. Hey, we're looking out for you.

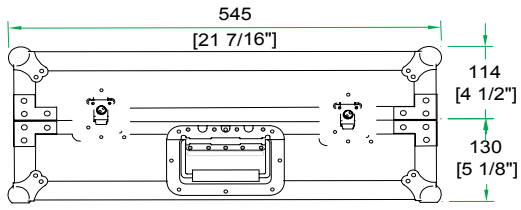
Road Ready Cases

1226 Corral Place * Santa Fe Springs, CA 90670

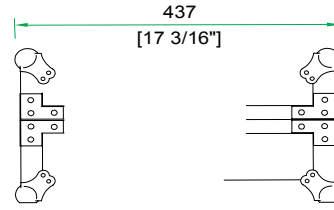
ph: 562.906.6185 * fax: 562.906.6186

WWW.ROADREADYCASES.COM

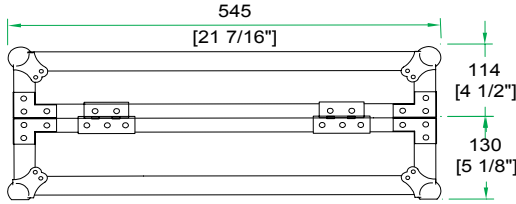
RR1200B



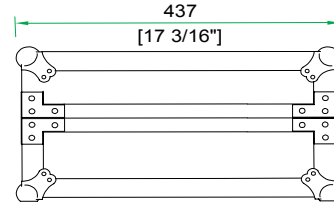
FRONT VIEW



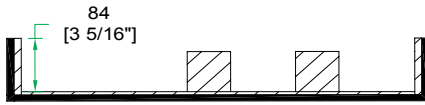
LEFT VIEW



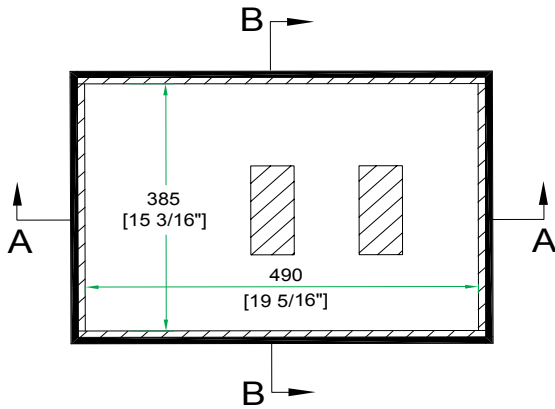
BACK VIEW



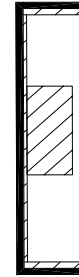
RIGHT VIEW



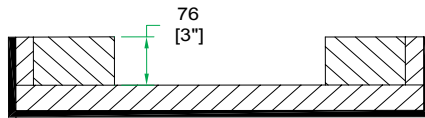
A-A VIEW



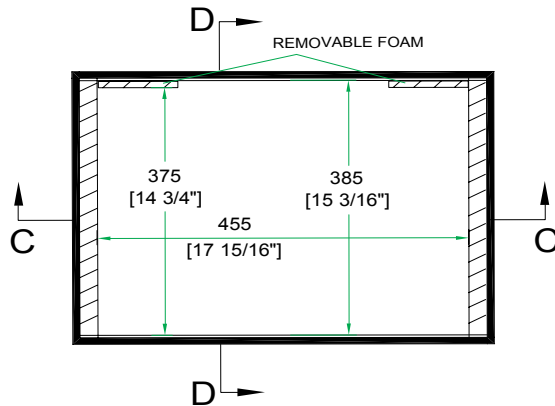
TOP VIEW OF COVER



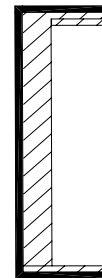
B-B VIEW



C-C VIEW



TOP VIEW OF BASE



D-D VIEW